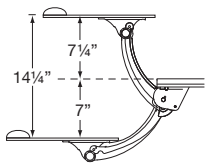


# Pinnacle AD

Adjustable Keyboards - Arms



Extended height range with 14.3" of adjustability



Includes tilt indicator gauge for accurate tilt adjustment



Ergonomically designed knob provides easy tilt adjustment



Ball bearing track for years of maintenance free use

## A Keyboard Arm with Extended Above Desk Range

The Pinnacle AD is Workrite's arm with the greatest range. It includes thoughtful features found in our Pinnacle family, like Lift-n-Lock™ for re-positioning and easy tilt adjustment with a built in tilt gauge. Ideal for situations where above desk keyboard platform is desired and stowing the platform under desk is convenient.

### Extended Height Range & Storability

The Pinnacle AD features our greatest height range of 14½", 7¼" above work surface and 7" below. At 7" below, the Pinnacle AD meets the seated low requirement of BIFMA G-1 2002 for the 5th percentile adult female and exceeds the seated requirement for the 95th percentile adult male. In addition the Pinnacle AD's extended above desk height range gives the majority of users the ability to work in standing positions. The unique design of the Pinnacle AD gives the best keyboard platform storage available in the industry, fully storing a platform as deep as 11½" under the work surface on a 22" track.

### Tilt Range and Tilt Gauge

The Pinnacle AD features a full 25° range tilt based on the ANSI BIFMA G-1 2002 Ergonomics specifications of 10° positive tilt and 15° negative tilt. Our convenient tilt gauge at the rear of the arm allows users to identify the comfortable tilt angle and easily set the tilt to their preferred position with our dial-tilt knob located on the right side of the arm.

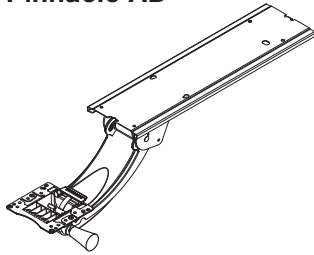
### Stores Effortlessly on Ball bearing Track

The Pinnacle AD uses our high quality low profile progressive ball bearing track for ease of use and years of trouble free service. Available in 17", 22" and 28" lengths the Pinnacle AD installs easily on all popular workstation depths. Also offered with a nylon track for budget conscious projects.


*At Workrite we believe every body has a right to work comfortably and safely for maximum productivity. You can trust Workrite, as 75% of Fortune 100 companies have, for solutions that fit today's diverse range of workers.*

# Pinnacle AD Adjustable Keyboards - Arms

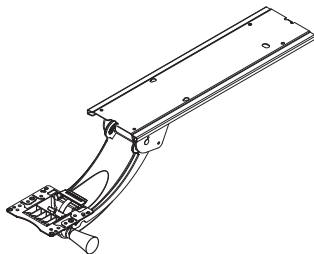
## Pinnacle AD



- Features sleek low-profile progressive ball bearing slide track for smooth, consistent operation
- Height range from 7¼" above desk to 7" below
- 360° swivel for easy positioning and storage
- Tilt range: -15° to +10°
- Lift-n-Lock for one touch height adjustment
- Easy tilt adjustment with ergonomic knob
- Non-intrusive, low profile track provides maximum knee clearance in 17", 22" and 28" lengths
- Complete, under desk storage with keyboard platforms as deep as 12" with a 22" track

Workrite Platforms	Track Length	Model #	Weight	LEED  %
All	17"	3176-17TG	10	34
	22"	3176-22TG	11	34
	28"	3176-28TG	12	34

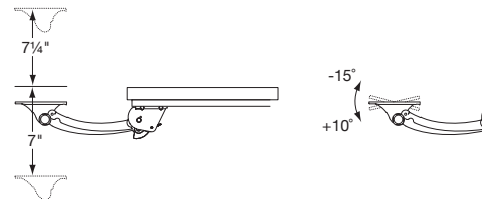
## Pinnacle AD - Value



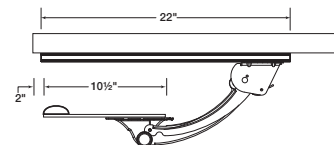
- Features nylon glide track
- Height range from 7¼" above desk to 7" below
- 360° swivel for easy positioning and storage
- Tilt range: -15° to +10°
- Lift-n-Lock for one touch height adjustment
- Easy tilt adjustment with ergonomic knob
- Non-intrusive, low profile track provides maximum knee clearance in 22" and 28" lengths
- Complete, under desk storage with keyboard platforms as deep as 12" with a 22" track

All	17"	3177-17N	10	34
	22"	3177-22N	11	34

### Height & Tilt Range



### Retracted Storage



Stored position with typical 10½" platform



©2009 Workrite Ergonomics  
All referenced company and product names are trademarks, registered trademarks or copyrights of their respective holders.

1400220-0409 Subject to change without notice.

Workrite Ergonomics, Inc.  
1450 Technology Lane,  
Petaluma, CA 94954  
www.workriteergo.com  
800.959.9675

**Workrite**  
ergonomics®